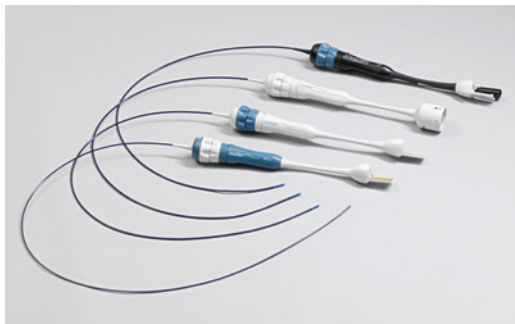


# Visualize what's needed in Electrophysiology

## ACUSON SC2000 PRIME Ultrasound System



The ACUSON SC2000 PRIME system provides you next-level visualization on a versatile system that offers 2D, 3D and volume ICE imaging with the broadest portfolio of ICE catheters on the market today.\*



ACUSON AcuNav ultrasound catheters



Z6Ms True volume TEE

A complete solution for your electrophysiology needs, the ACUSON SC2000 PRIME, can help improve the management of patients from diagnosis to pre-procedural planning and from treatment to follow-up.

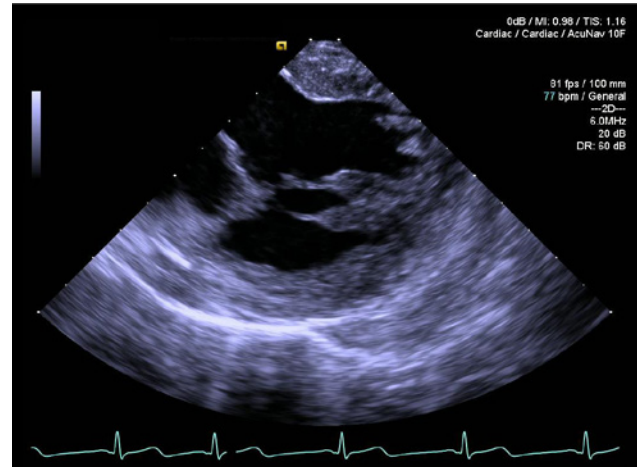
Siemens Healthineers offers three shared service cardiovascular products that are capable of 2D ICE imaging: ACUSON P500, ACUSON S Family and ACUSON X700 ultrasound systems. The ACUSON SC2000 PRIME is the only dedicated premium cardiovascular ultrasound offering that has 2D and 3D ICE capabilities in Siemens Healthineers cardiology segment.

\*Based on competitive data available July 2017.

# ACUSON AcuNav Ultrasound Catheter Family

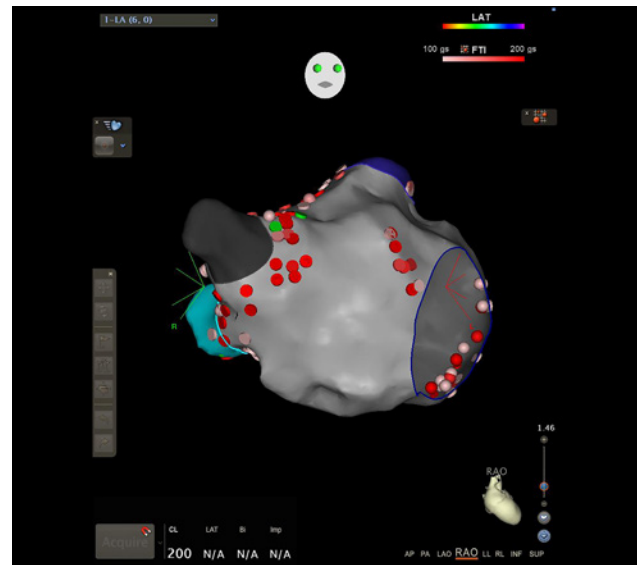
## ACUSON AcuNav ultrasound catheters

Imaging with ACUSON AcuNav catheters offers insights into anatomical details so you can confidently guide and navigate procedures with real-time monitoring throughout the entire procedure.



## SoundStar® Catheter

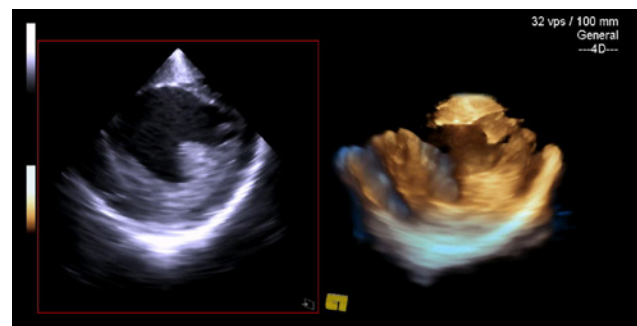
CartoSound® Module technology with the SoundStar® Catheter brings ICE imaging to the next level. It enables you to create same day, three-dimensional heart shells for improved anatomical accuracy. Ablation tip overlay provides real-time visualization of the catheter tip to improve visual accuracy.



# ACUSON AcuNav V Ultrasound Catheter

## ACUSON AcuNav V catheter

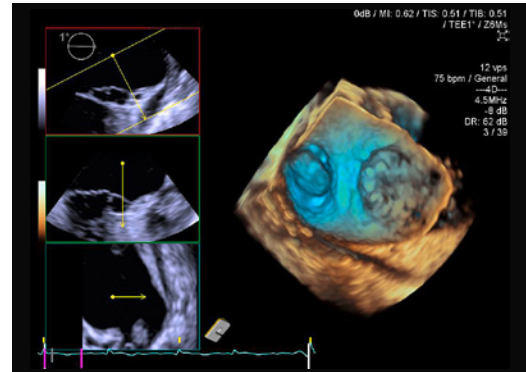
The ACUSON AcuNav V catheter advances the current ICE technology by bringing the first volume imaging capability in an ICE catheter offering a 90°x 24° field of view.



# Transesophageal Echo (TEE)

## Z6Ms True volume TEE

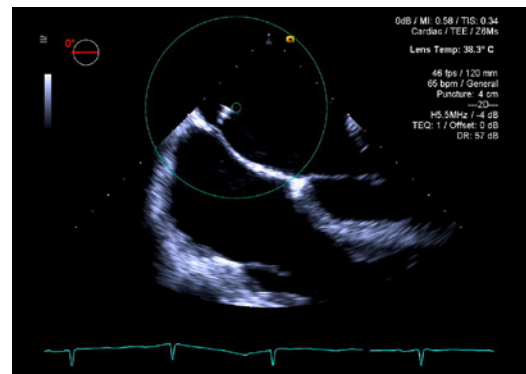
Real-time volume and volume color Doppler is essential for diagnosis and interventions, it provides real-time assessment of anatomy and physiology at clinically relevant volume size and volume rates without stitching, even for patients with arrhythmia.



## Septal guide

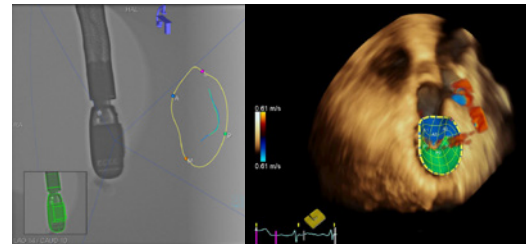
Septal puncture is a critical step for catheter based procedures in the left heart. With septal guide, you can guide real-time monitoring of the puncture to help ensure proper catheter placement in an intervention.

Siemens  
Healthineers  
Exclusive



## TrueFusion\* echo-fluoro guidance

Simplify your complex procedures with integrated real-time echocardiography and X-ray imaging with TrueFusion. Combine up to 15 marker overlays and valve models for efficient guidance that could potentially lower dose, reduce contrast and decrease time during procedures.



# ACUSON SC2000 PRIME Ultrasound System Precision at the Speed of Life:

- With the ACUSON AcuNav family of catheters and the Z6Ms True Volume TEE transducer, you can assess the left atrial appendage, have real-time procedural guidance and utilize the CartoSound® Module technology for a complete anatomical assessment for your Electrophysiology procedures.
- The ACUSON SC2000 PRIME can support more electrophysiology and structural heart procedures increasing asset utilization and potentially lowering training costs.
- With real-time true volume imaging capabilities along with the Z6Ms true volume TEE transducer and ACUSON AcuNav Family of ICE catheters, the ACUSON SC2000 PRIME truly is the most complete package on the market today.\*\*

\*TrueFusion represents a workflow consisting of syngo® TrueFusion and TrueFusion™ echo-fluoro guidance.

\*\*Based on competitive data available July 2017.

The products/features are not commercially available in all countries. Due to regulatory reasons their future availability cannot be guaranteed. Please contact your local Siemens organization for further details.

ACUSON SC2000, ACUSON P500, ACUSON S Family, ACUSON X700, AcuNav, AcuNav V, and TrueFusion are trademarks of Siemens Medical Solutions USA, Inc.

syngo® is a registered trademark owned by Siemens Healthcare GmbH.

SoundStar® Catheter and CartoSound® Module, and Carto® mapping system are registered trademarks of Biosense Webster, part of the Johnson & Johnson Family of Companies.

---

**Siemens Healthineers Headquarters**

Siemens Healthcare GmbH  
Henkestr. 127  
91052 Erlangen, Germany  
Phone: +49 9131 84-0  
siemens-healthineers.com

**Legal Manufacturer**

Siemens Medical Solutions USA, Inc.  
Ultrasound  
685 East Middlefield Road  
Mountain View, CA 94043, USA  
Phone: +1-888-826-9702  
siemens.com/ultrasound